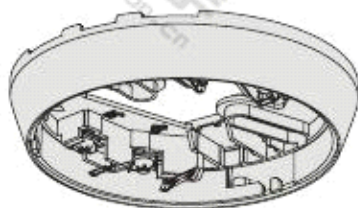


SIEMENS



DB720-CN Detector base Product Manual

Overview

The DB720-CN addressable detector bases are universal bases. It is installed on fire detection site and used for following detectors:

- OH720-CN Multi-sensor smoke detector
- OP720-CN Smoke detector
- HI720-CN Heat detector (Static)
- HI722-CN Heat detector (Static+ROR)

Characteristics

- Easy installation
- Universal base, suited for surface and recess mounting
- Large opening in the detector base for easy cable insertion
- Accessories for surface mounting, humid or wet environments, theft prevention, dust protection, location inscription
- Adopt environmental protected material and production process to fulfil RoHS standard

Installation

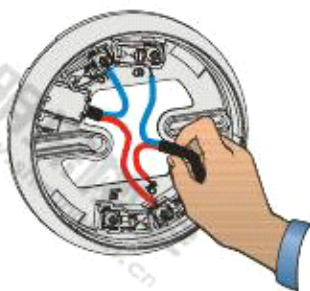


Fig. 1

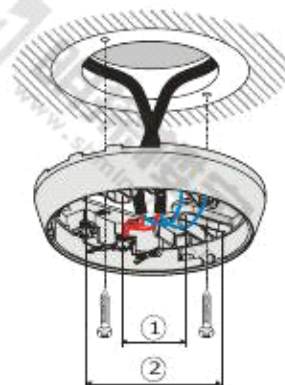


Fig. 2

- ① Minimum Ø 40 mm
- ② Maximum Ø 90 mm

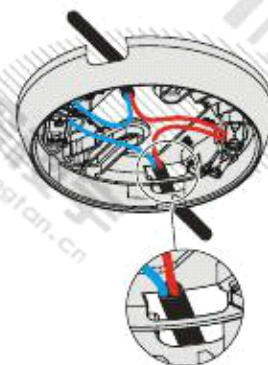


Fig. 3

Building Technologies

Fire Safety & Security Products

Procedure of installation:

1. Insert the cables through the base using either surface mounting (cable diameter of up to 8 mm) or recess mounting (Fig. 2/Fig. 3).
2. Install the detector base directly on the recessed box or an even surface (Fig. 2).
3. Connect the cable to the terminals according to Fig. 1/Fig. 4.
4. Place the cables flat on the bottom of the detector base so that they do not hamper insertion of the detector.

Note:

- If a surface-mounted cable feed is used, there are two possible break-out points on the detector base for the cable entry (Fig. 3).

Connection diagram

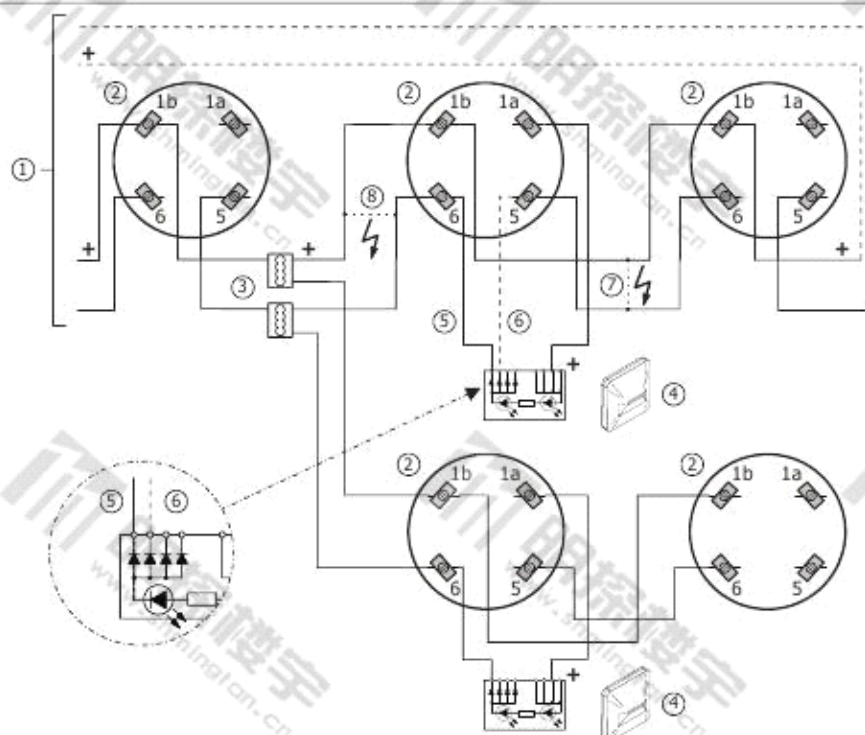


Fig. 4

Legend

- | | |
|---------------------------------|---------------------------|
| 1 Control panel | 5 Cable -E_AI6 |
| 2 Detector base DB720-CN | 6 Cable -E_AI5 (optional) |
| 3 Auxiliary terminal DBZ1190-XX | 7 Short circuit (error) |
| 4 Ext. alarm indicator | 8 Short circuit (error) |

Comments

- If a shielded cable is used for connecting the external alarm indicator, its shield must be connected to the shield for the detector bus.
- The alarm indicator connected will continue to function correctly in the event of a short circuit occurring at position 7 on the connection diagram. The alarm indicator is triggered by cable -E_AI6.
If the short circuit occurs at position 8 on the connection diagram, the alarm indicator will no longer be triggered.
As an option, the alarm indicator may also be connected using cable -E_AI5.
In this case, the alarm indicator will correctly indicate an alarm even if a short circuit occurs at position 8.
Therefore, this ensures that the alarm indicator will always function correctly.



The option described is only possible in a loop line.

Accessory

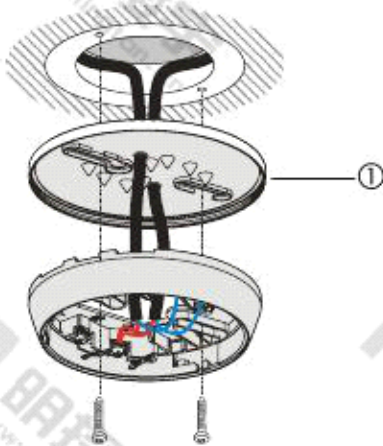


Fig. 5
1- Detector base seal RS720



Fig. 8
Micro terminals DBZ1190-AA

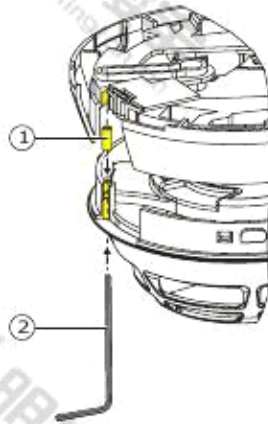


Fig. 6
1- Grub screw M3 x 12 mm
2- Hexagonal wrench



Fig. 9
Connection terminals DBZ1190-AB

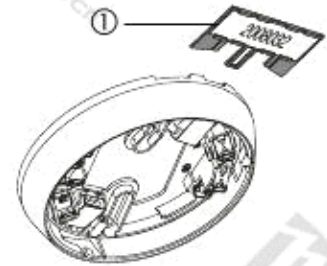


Fig. 7
1- Designation plate FDBZ291

- **Detector base seal RS720 (Fig. 5)**

- The detector base seal RS720 is used for the installation of detectors in wet rooms. Protection category: IP42
- Compatible with detector base DB720-CN
- May only be used with recess-mounted cable feeds
- The detector base seal is installed between the ceiling and the detector base DB720-CN

- **Detector locking device LP720 (Fig. 6)**

- The detector can be protected against theft with the detector locking device LP720
- The detector locking device LP720 is compatible with the detector base DB720-CN
- Installation of LP720:
 1. Insert the detector in the detector base.
 2. Insert the hexagonal wrench provided in the bore hole on the detector housing and tighten the grub screw.

- **Designation plate FDBZ291 (Fig. 7)**

- In order to provide the detector with a location address, the designation plate FDBZ291 is labeled and attached to the detector base DB720-CN

- **Micro terminals DBZ1190-AA (Fig. 8)**

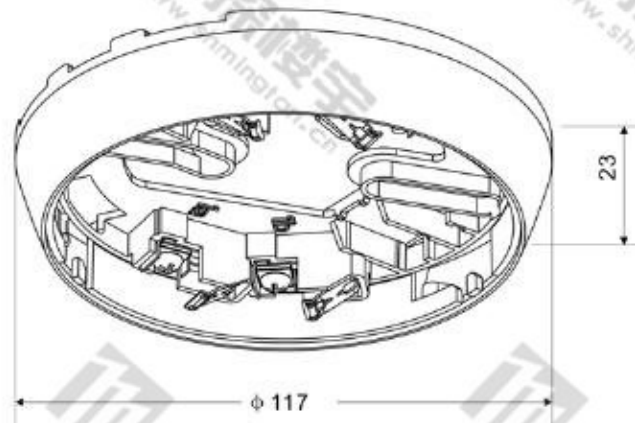
- 4 poles
- For wire diameters of 0.28 ... 0.5 mm²
- For T-branches of additional cabling, e.g., for external alarm indicators

- **Connection terminals DBZ1190-AB (Fig. 9)**

- 3 poles
- For wire diameters of 1 ... 2.5 mm²
- For T-branches of additional cabling, e.g., for external alarm indicators

Dimensions

In: mm



Technical data

Conductor cross section

- Connecting terminals in detector base	0.2 ... 1.5 mm ²
- Connection terminals	1.0 ... 2.5 mm ²
- Micro terminals	0.28 ... 0.5 mm ²

Operating temperature

Storage temperature

Humidity

according to data sheet detectors

Protection category EN60529 / IEC529

Color

pure white, RAL 9010

Details for ordering

Type	Material no	Part no	Designation	Weight
DB720-CN	S54319-F4-A101	100700917	Detector base	0.052 Kg
RS720	S54319-F8-A1	100681370	Detector base seal	
LP720	S54319-F9-A1	100681369	Detector locking device	
FDBZ291		A5Q00002621	Designation plate	
DBZ1190-AA		4677080001	Micro terminals 0.28 ... 0.5 mm ²	
DBZ1190-AB		4942340001	Connection terminals 1 ... 2.5 mm ²	

Beijing Siemens Cerberus Electronics Ltd.
No. 18 Xinxi Road Shangdi Information Industry Base,
Haidian District, Beijing 100085 China
Tel.: +10 6296 2255
Fax: +10 6298 7387

© 2008 Copyright by
Beijing Siemens Cerberus Electronics Ltd.
Data and design subject to change without notice.